

Beads Guns

BM C 20

- BM C 20 Bead gun

(504563)



- Repair kit

(504421)



- Distributer

- 8 cm
- 10 cm
- 12 cm
- 15 cm
- 20 cm

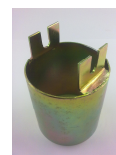
(107934)

(CEO00T2)

(109623)

(109624)

(CEO01SB)



- Valve cone small. (10 cm - 15 cm)

(CEO001Z)



- Valve cone large. (15 cm - 25 cm)

(HTP02HM)



- Adjustment screw

(503433)



- Adjustment nut

(CEO0024)

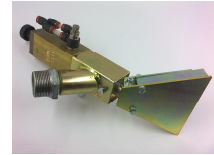


Common spare parts “Equipment”

2013-01-02

BM C 30

- Bead gun with push in fittings (113208)



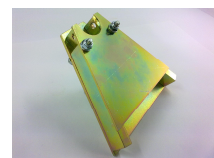
- Bead gun with hose union (114038)



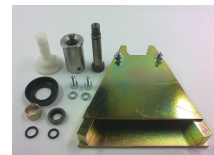
- Repair kit for new model (510445)



- Diffuser complete (remember update kit for older models) (201609)



- Update kit (Update to new model, diffuser included) (510165)



- Update kit for only old BM C 30 (model 1) (500466)



- Adjustment screw (500890)



- Adjustment nut (500891)



Common spare parts “Equipment”

2013-01-02

➤ Needle valve – adjustment for atomizer air.

○ For push in fitting

(510574)



○ For hose union

(503164)



Pressurized bead tanks

➤ Relief valve

○ 3.0 bars. Tank sizes

(510554)



○ 1.2 bars. Tank sizes

(500609)



• Ball valve for air (1/2” – 3 way)

(503184)



• Pressure regulator

(500608)



• Pressure regulator (0-1.2 bar)

(510409)



Common spare parts “Equipment”

2013-01-02

- Pressure manometer (0-4 bar) (511013)



- Pressure manometer (0-1.6 bar) (510377)



- Electric sensor for low level (725942)



- Cable for sensor (Used if older sensor is mounted) (762761)



- Gasket for lit.

- O-ring 200,0 x 6.99 mm Borum standard (501058)



- O-ring 139,07 x 6.99 mm.(BM 250-2) (510369)



- For old BM 350 (111573)



Pneumatic control valve

- Norgren 2X3/2 NC (502874)



Common spare parts “Equipment”

2013-01-02

- Norgren 2X3/2 NC/NO

(502875)



- Univer ac 7500

(503027)



- Univer cl 302 a

(500001)



- Electric plug for ac 7500

(500003)



- Electric coil for ac 7500.

(500002)



Other parts

- Valve for glass bead hose

- Length 120mm
- Length 130mm
- Length 150mm

(204164)

(208723)

(204168)



- Glass bead hose

- ø 38 mm
- ø 28 mm

(500010)

(504368)

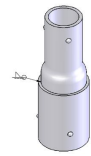
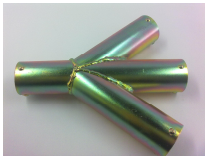
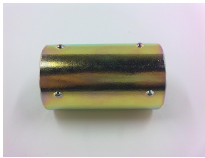


- Clamps for hoses.

Common spare parts “Equipment”

2013-01-02

- for \varnothing 38 mm (50 mm) (503922)
- for \varnothing 28 mm (40 mm) (504544)
- Pipes for glass bead hoses
 - Pipe for bead valve 38 mm (112472)
 - Bead splitter 4 x 38 mm (201046)
 - Branch pipe 4 x 38 mm (204157)
 - Branch pipe 5 x 38 mm (200181)
 - Pipe for bead hoses \varnothing 38-28 (202115)
 - Pipe for bead hose (202012)



Common spare parts “Equipment”

2013-01-02

- T-pipe for pressure bead container (201109)
- Bead splitter 1 x 38mm – 2 x 28mm (112596)
- Bead splitter 1 x 38mm – 3 x 28mm (113022)
- Quick connectors for glass bead hoses.
 - 1 1/2", Female (508405)
 - 1 1/2", Male (508406)
 - 1 1/2", 1 Female cover (508407)
- Bead delay module (Mounted in BM Multi Function) (502145)

