

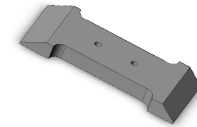
Common spare parts “Equipment”

2013-01-02

Dot n´Line (1st edition)

Shutters

- Shutter 40mm
- Shutter 50mm
- Shutter 60mm
- Shutter 70mm
- Shutter 80mm
- Shutter 100mm



- (204193)
- (204194)
- (203000)
- (204195)
- (204196)
- (204197)

Bottom line for Line

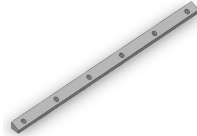
- 30 cm
- 40 cm
- 50 cm



- (203007)
- (203008)
- (203009)

Bottom line for Dot

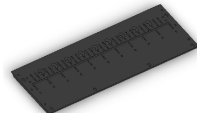
- 30 cm
- 40 cm
- 50 cm



- (203010)
- (203011)
- (203012)

Wear plate Line

- 30 cm
- 40 cm
- 50 cm



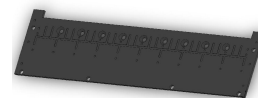
- (203004)
- (203005)
- (203006)

Common spare parts “Equipment”

2013-01-02

Wear plate Dot

- 30 cm (203001)
- 40 cm (203002)
- 50 cm (203003)



Shaft for rotor

- Dot shaft/rotor (ø15) (6x50) (203013)
- Dot shaft/rotor (ø15) (8x50) (203014)
- Dot shaft/rotor (ø15) (10x50) (203015)

- Dot shaft/rotor (ø18) (6x50) (203016)
- Dot shaft/rotor (ø18) (8x50) (203017)
- Dot shaft/rotor (ø18) (10x50) (203018)
- Dot shaft/rotor (ø18) (8x60) (201941)
- Dot shaft/rotor (ø18) (80-2x60-6x50) (202274)

- Dot shaft/rotor (ø23) (6x50) (203019)
- Dot shaft/rotor (ø23) (8x50) (203020)
- Dot shaft/rotor (ø23) (10x50) (203021)



Pneumatic quick connectors

- Male for shutters (1/2”) (510242)

- Female for shutters (1/2”) (510241)

- Male for lift and glass bead guns (3/8”) (504344)



Common spare parts “Equipment”

2013-01-02

- Female for lift and glass bead guns (3/8”)

(504343)



Hydraulic quick connectors

- Male (flat face 1/2”)

(508113)



- Male (ISO A 1/2”)

(508116)



- Female (flat face 1/2”)

(508112)



- Female (ISO A 1/2”)

(508115)



Other parts

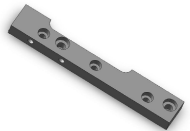
- Shutter greasing segment

(203023)



- Line Shutter end segments left

(203024)



- Line Shutter end segments right

(203025)



Common spare parts “Equipment”

2013-01-02

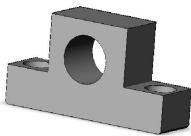
- Dot Shutter end segments left (203026)



- Dot Shutter end segments right (203027)



- Connector for shutter (203028)



- Connector for shutter rods (F-connector) (503287)



- Grease nipple (508742)



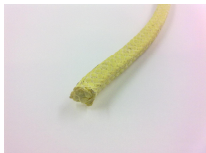
- Greasing hose (112303)



- Fitting for greasing hose (508740)



- Dot shaft seals (Teflon rope 8x8mm) (510789)



- Bearing for Dot shaft (510751)



Common spare parts “Equipment”

2013-01-02

- Teflon for ring lock

(203022)



- Chain wheel

(508735)



- Tapper lock no. 1008-16

(508736)



- Tapper lock no. 1008-20

(508737)



- Chain

(508738)



- Mounting link for chain

(508739)



- Actuator complete

(502881)



- Motor for actuator

(502921)



Common spare parts “Equipment”

2013-01-02

- Swivel joint for cylinder

(508733)



- Hydraulic motor

(510502)



- Pneumatic cylinder

(508734)



- Norgren valve

(502873)



- Consol for support wheel

(201033)

