

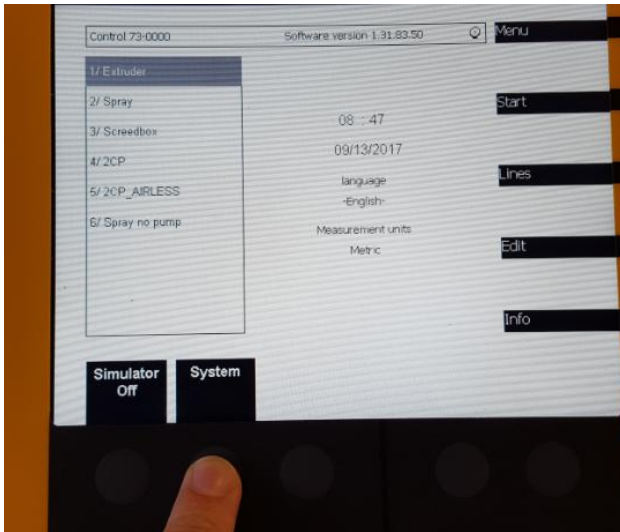
Save and load settings of BM LineMaster

It is possible to Save and Load the settings from the LineMaster. You can also copy the settings from one LineMaster to another. All settings except the serial number will be copied.

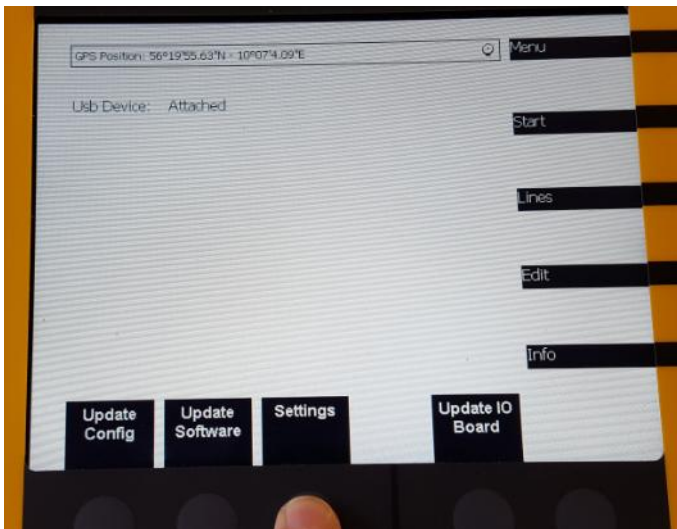
- 1) Inset the USB into the LineMaster



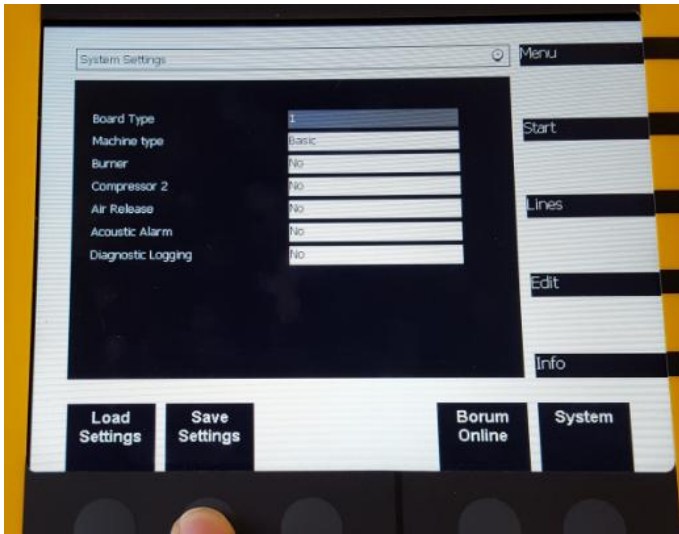
- 2) Go to "System"



- 3) Press "Settings"



4) Press "Save" for save settings



5) Press "Load" for load settings

