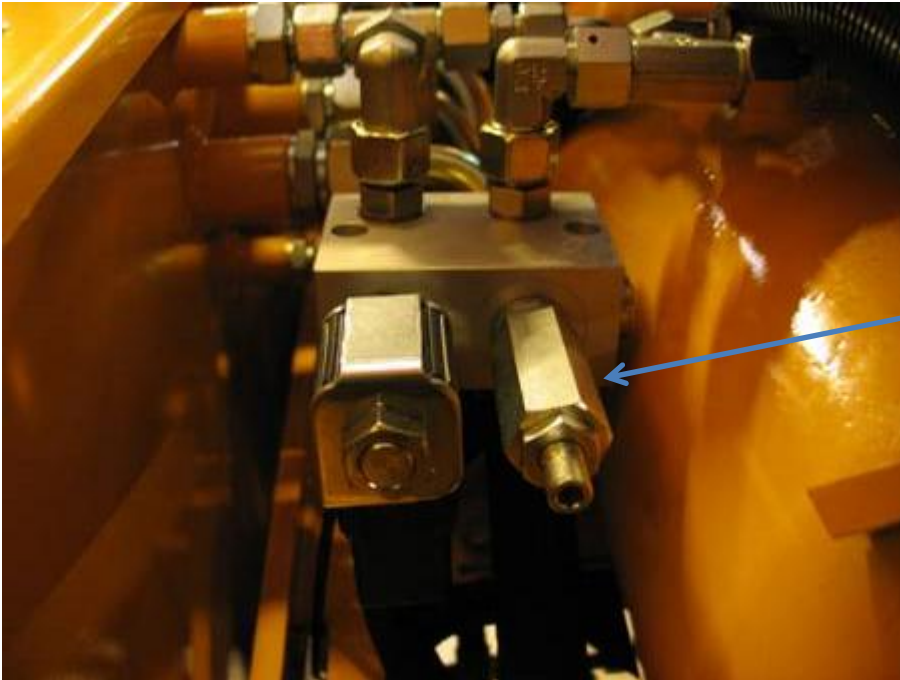


## Adjusting of Dual Torque Steering



Adjustable pressure relief valve

The Dual Torque is made so it is possible to change between easy steering and hard steering.

When you are using the equipment many will prefer the steering to be Hard, to prevent wobbling driving. When only using the machine for transporting, most prefers easy steering.

Therefore there is mounted a valve that lowers the hydraulic pressure (Standard 30 Bars) for the steering system, when activated. It will be activated when the Equipment is put to down position.

It is possible to adjust the Hardness of the steering when the valve is activated.

If the Adjustable pressure relief valve is turned **clockwise**, the pressure in the steering system will higher and the steering will be easier.

If the Adjustable pressure relief valve is turned **counterclockwise**, the pressure in the steering will be lower and the steering will be harder.